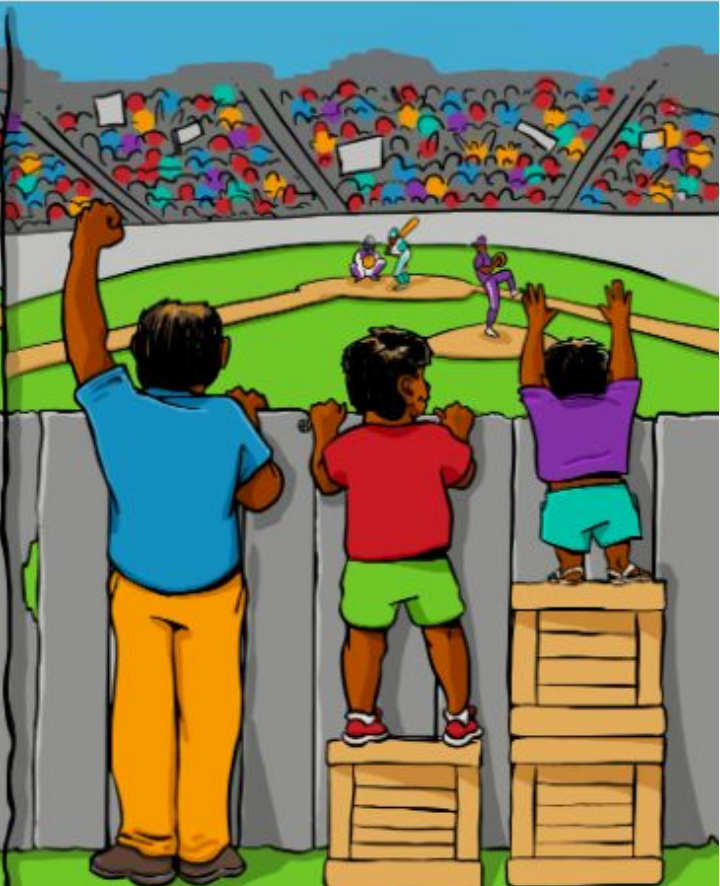


**EQUALITY**



**EQUITY**

## Tree represents:

- Confidence
- Safety
- Steadiness
- Resilience
- Security
- Community
- Wisdom
- Mental health
- Home
- Inclusive
- Nurtured by the world



## Swift represents:

- Discovery
- Risk
- Dynamic
- Skilled
- Physical fitness
- Explorer
- Outward looking

## Roots to grow, wings to fly

- Roots:
  - A solid base, part of the world (not apart from).
  - Secure, resilient foundations
  - Nurtured by and nurturer of
- Wings:
  - Flights and freedom of thought
  - Bravery and risk
  - Wonder, not fear

Tree - a home for many, friend to all, enemy of none.

A link between tree and bird -

- symbiotic relationship, interdependent
- Tree the security for bird to always have.

Resilience can come from adversity (JW - “dyslexia made me work harder” - 3 A\* at a-level)



# Roots to grow, wings to fly

Newnham Croft vision

To help every child find the confidence, self-belief and resilience that will enable them to explore, value and appreciate the world.



The Newnham Code: **Be Kind, Be Respectful, Be A Thinker, Never Give Up**